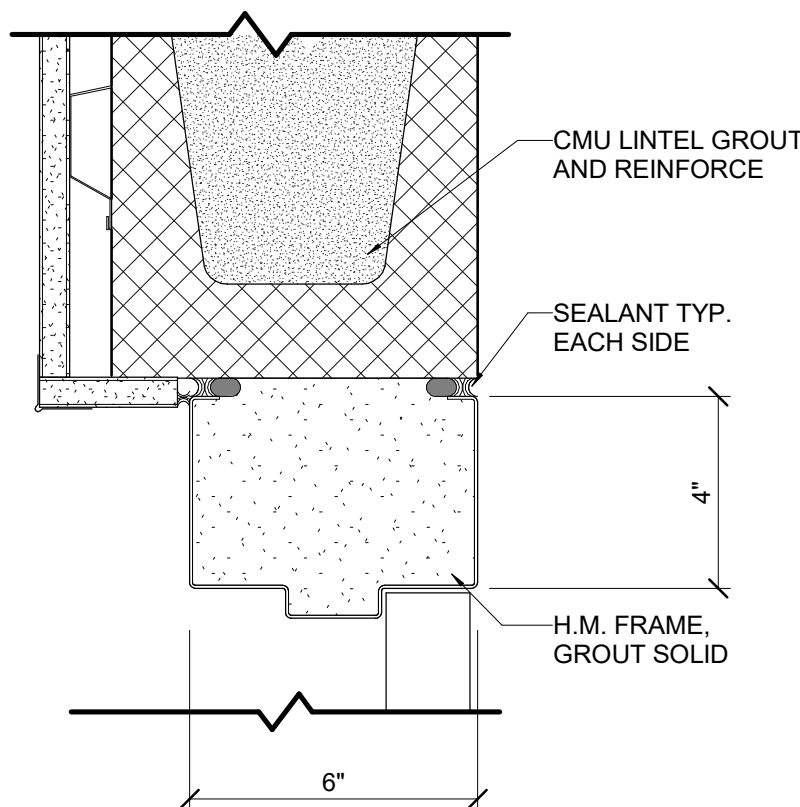
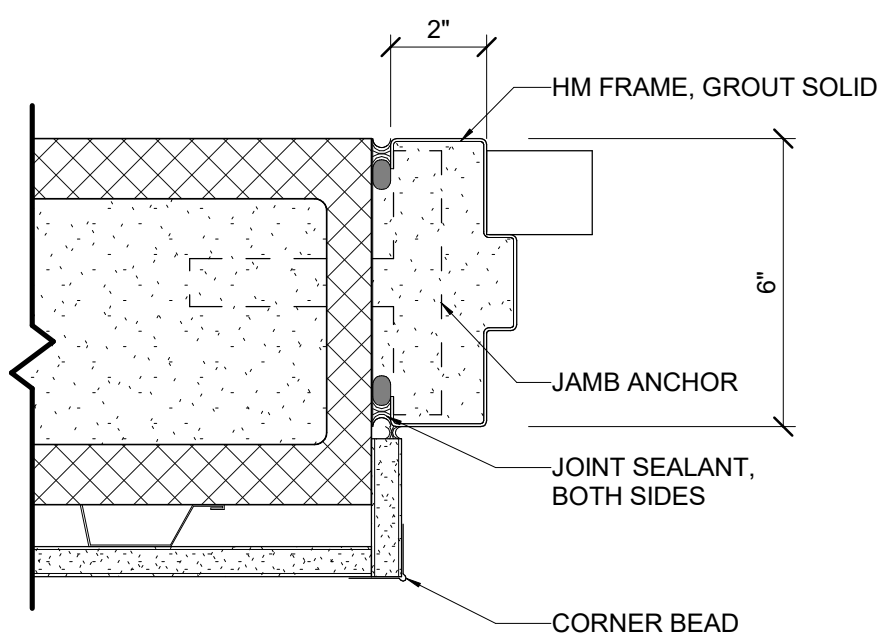


11 DETAIL HM HEAD @ CMU WALL

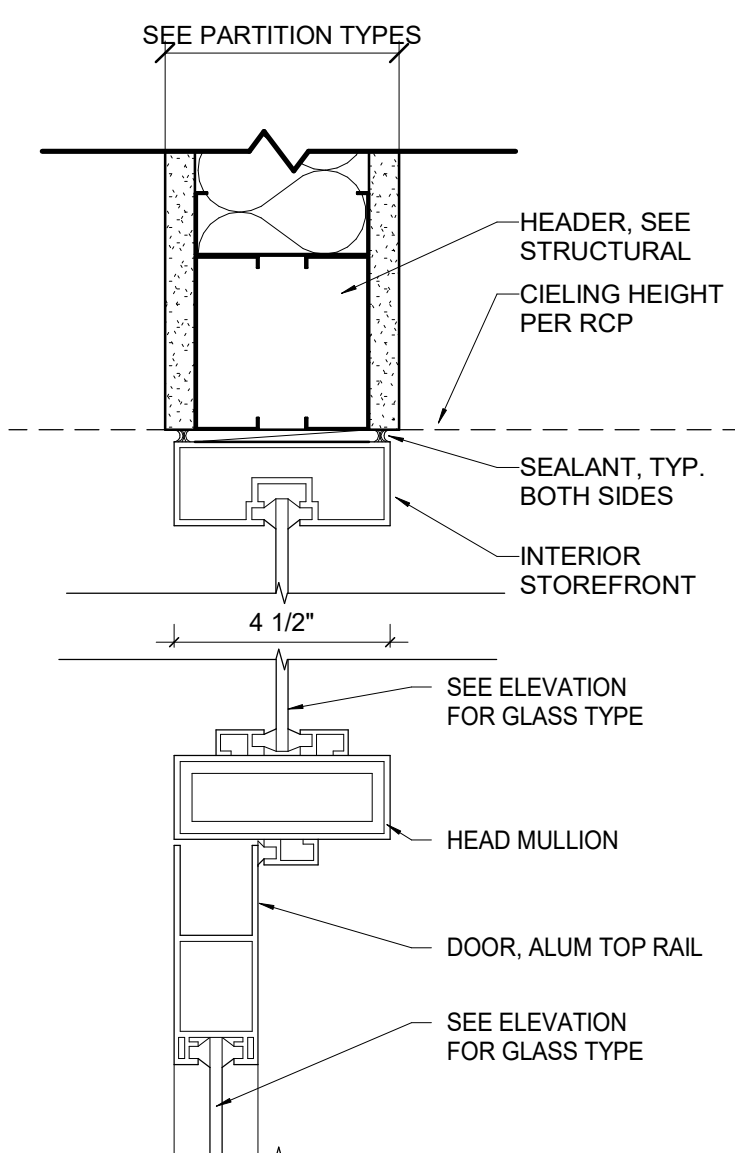
3" = 1'-0"

**6 DETAIL** HM JAMB @ CMU WALL

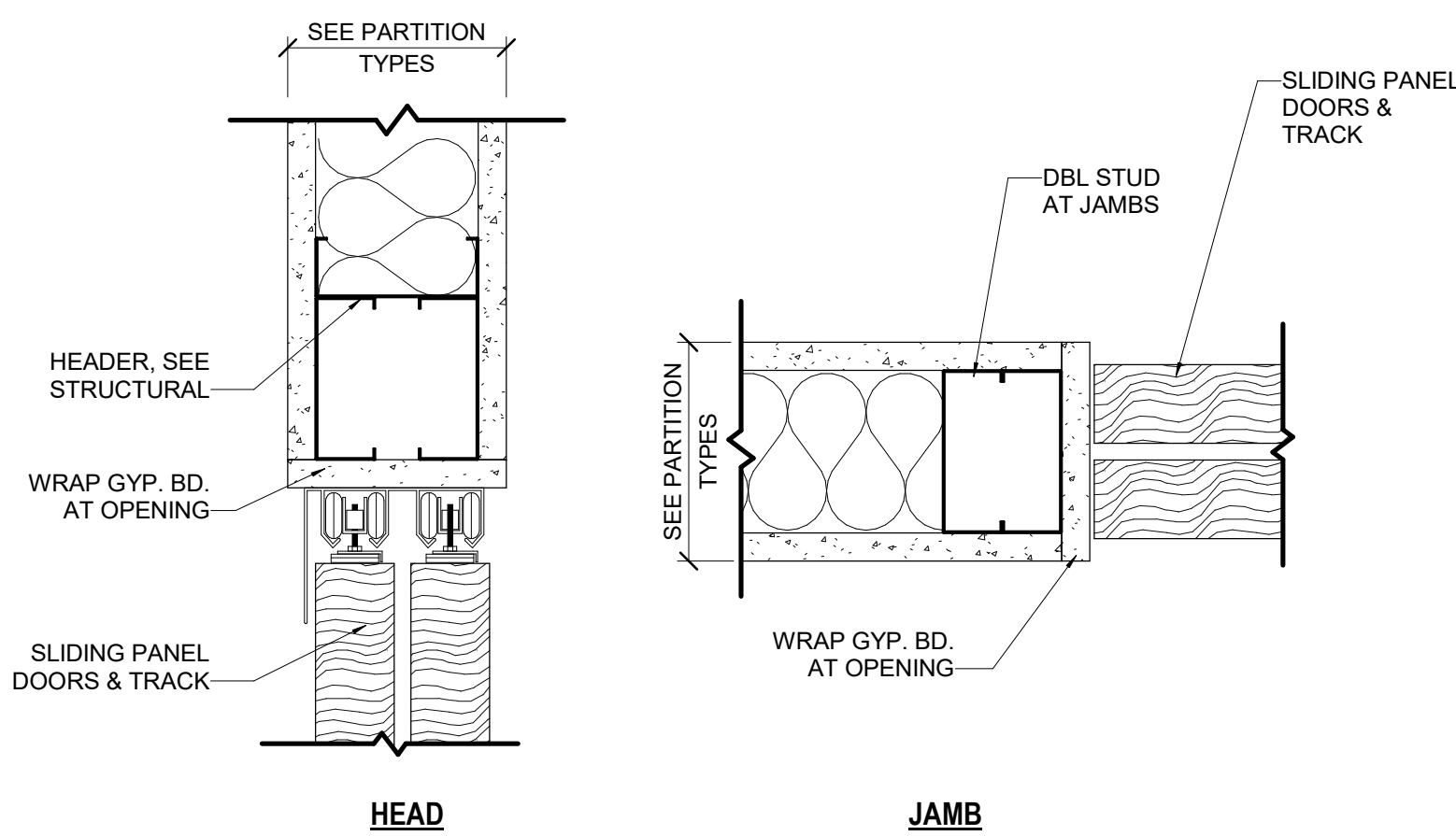
3" = 1'-0"

**10 DETAIL** ALUM SF DOOR HEAD

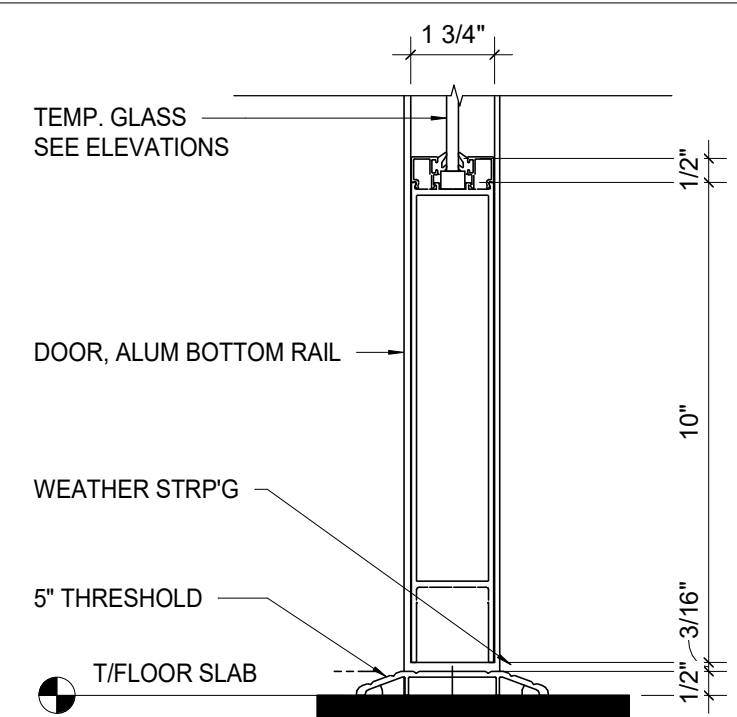
3" = 1'-0"

**5 DETAIL** SLIDING PANEL DOOR

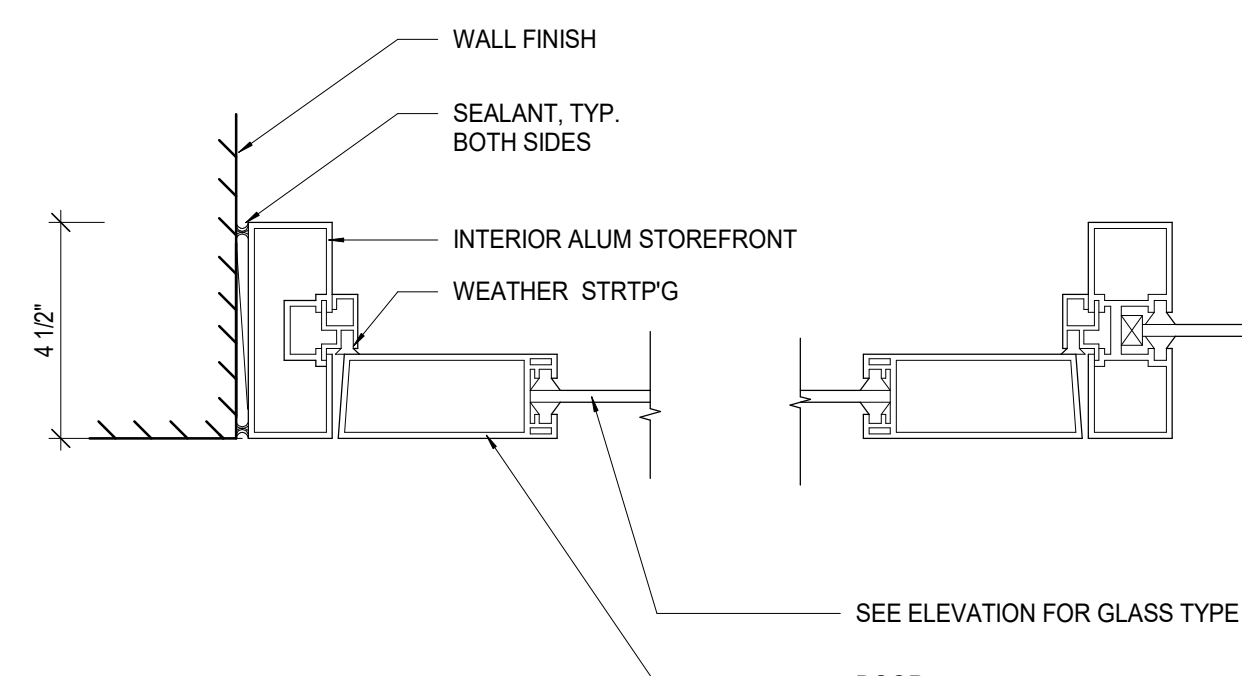
3" = 1'-0"

**9 DETAIL** ALUM SF DOOR THRESHOLD

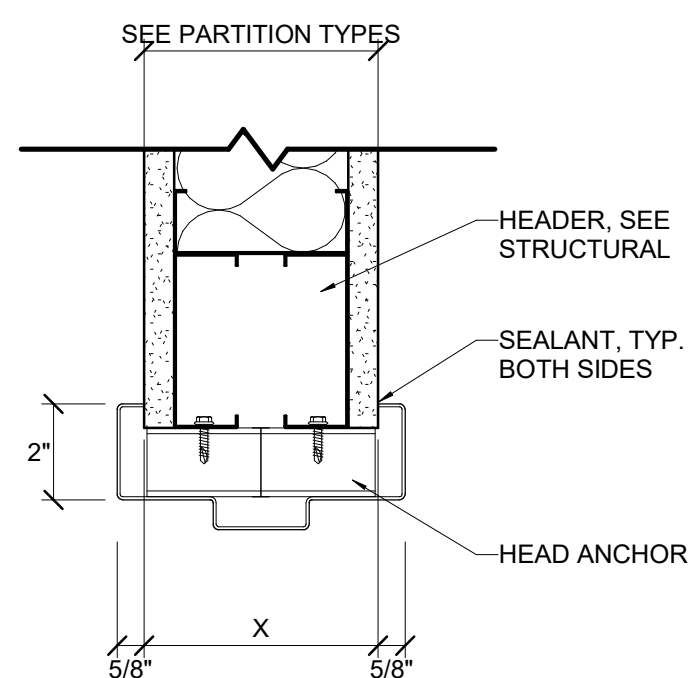
3" = 1'-0"

**4 DETAIL** ALUM SF DOOR JAMB

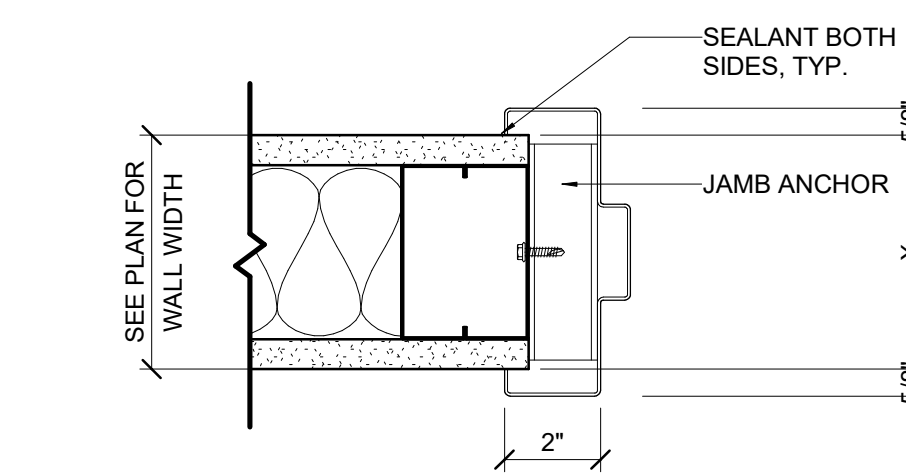
3" = 1'-0"

**8 DETAIL** HM HEAD @ METAL STUD PARTITION

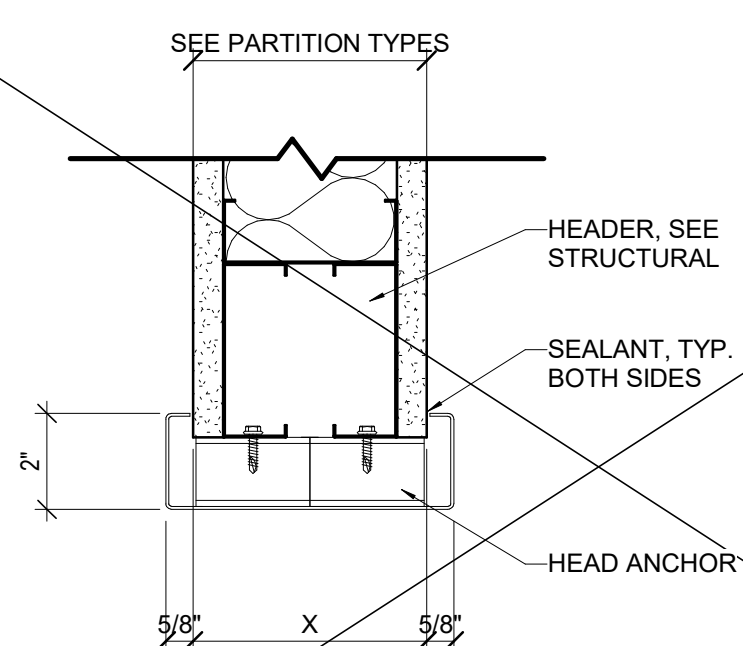
3" = 1'-0"

**3 DETAIL** HM JAMB @ METAL STUD PARTITION

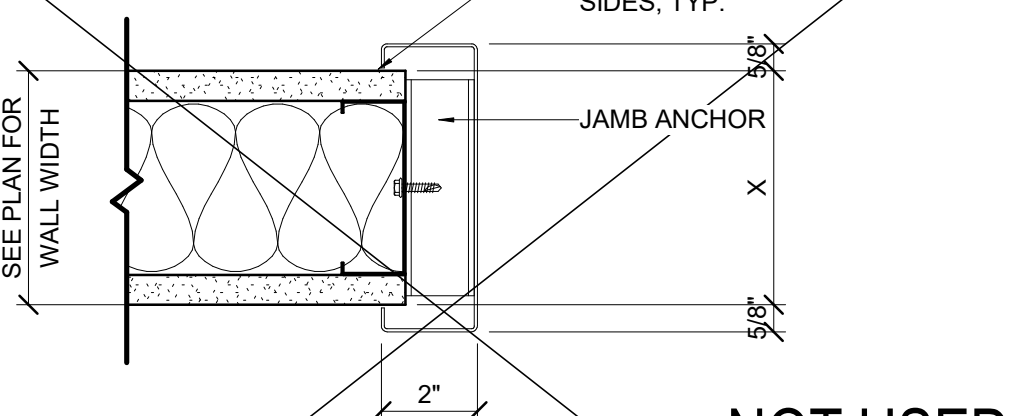
3" = 1'-0"

**7 DETAIL** CASED OPG HEAD @ METAL STUD PARTITION

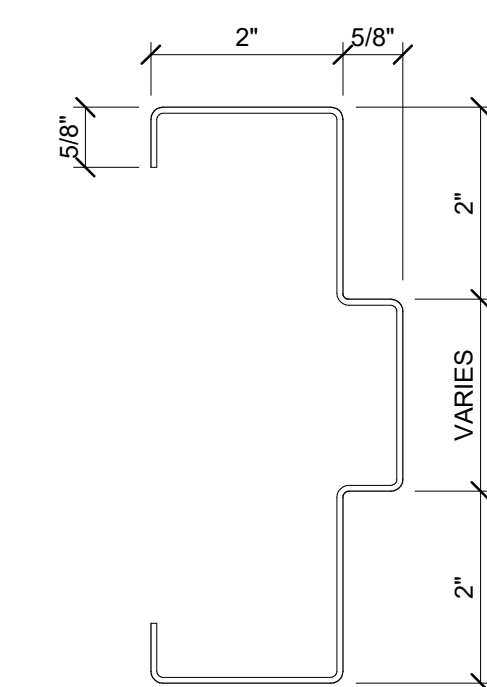
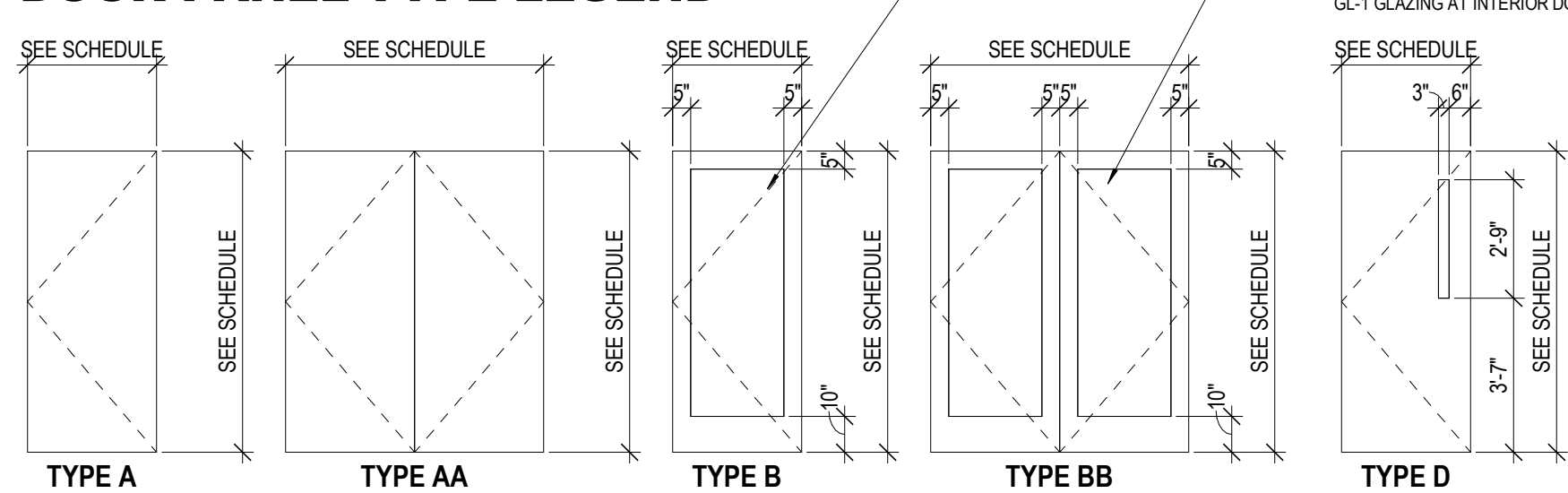
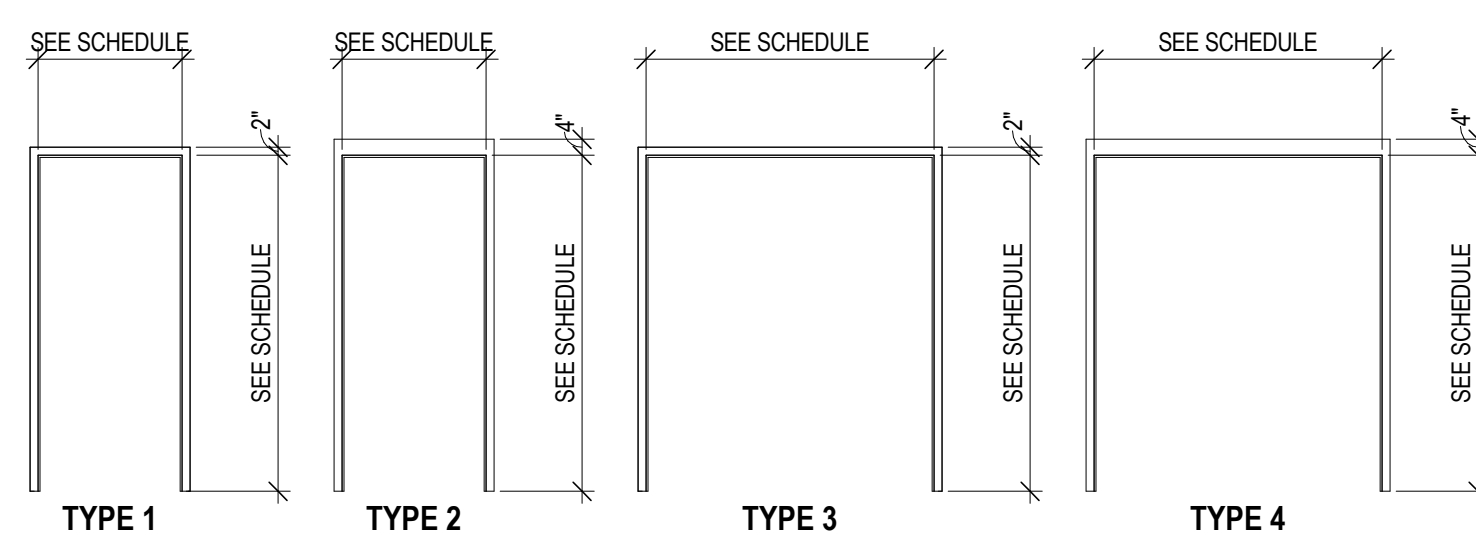
3" = 1'-0"

**2 DETAIL** CASED OPG JAMB @ METAL STUD PARTITION

3" = 1'-0"

**1 DETAIL** TYP DOOR FRAME PROFILE

6" = 1'-0"

**DOOR PANEL TYPE LEGEND****DOOR FRAME TYPE LEGEND****DOOR SCHEDULE - COMMON AREAS**

NUMBER	ROOM NAME	DOOR			FRAME			FIRE RATING	HW SET	DETAILS - SHEET A701 U.N.O.			REMARKS
		WIDTH	HEIGHT	MATERIAL	ELEV	MATERIAL	ELEV			HEAD	JAMB	SILL	
LEVEL 00													
100A	VESTIBULE	6'-0"	7'-0"	ALUM	BB	ALUM	01 / A721	--	2.0	13/A523 SIM, 2/A702	3/A702	1/A702	1, 9
100B	VESTIBULE	6'-0"	7'-0"	ALUM	BB	ALUM	1 / A720	--	8.0	10	4	9	1, 3, 9
101	STUDY	3'-0"	7'-0"	ALUM	B	ALUM	7 / A720	--	20.0	10	4	9	1
101A	STUDY	3'-0"	7'-0"	ALUM	B	ALUM	9 / A720	--	12.0	10	4	9	1
101B	STUDY	3'-0"	7'-0"	ALUM	B	ALUM	9 / A720	--	12.0	10	4	9	1
101C	STUDY	3'-0"	7'-0"	ALUM	B	ALUM	9 / A720	--	12.0	10	4	9	1
101D	STUDY	3'-0"	7'-0"	ALUM	B	ALUM	6 / A720	--	12.0	10	4	9	1
102	STUDY	3'-0"	7'-0"	ALUM	B	ALUM	5 / A720	--	19.0	10	4	9	1
105	RES. MGR. OFFICE	3'-0"	7'-0"	ALUM	B	ALUM	2 / A720	--	16.0	10	4	9	1
106	CLOSET	3'-0"	7'-0"	HM / 1	A	HM		--	21.0	8	3		
111	LAUNDRY	3'-0"	7'-0"	ALUM	B	ALUM	10 / A720	--	10.0	10		9	1
114	RESTROOM	3'-0"	7'-0"	HM / 1	A	HM		--	13.0	8	3		
116	FIRE PUMP	3'-0"	7'-0"	HM	A	HM	2	--	7.0	1/A731	2/A731	5/A702	
120A	COMMON AREA	3'-0"	7'-0"	ALUM	B	ALUM	04 / A721	--	1.0	2/A702, 17/A731	4/A702, 10/A702, 6/A731	1/A702	1, 3
122A	MECHANICAL	6'-0"	7'-0"	HM	AA	HM	4	--	6.0	1/A731	2/A731	5/A702	
122B	MECHANICAL	3'-0"	7'-0"	HM	A	HM	1	--	25.0	8	3		
122C	ELEC	3'-0"	7'-0"	HM	A	HM	1	--	5.0	8	3		
124E	ELEC	3'-0"	7'-0"	HM	A	HM	2	--	5.0	1/A731	2/A731	5/A702	
125S	STAIR 2	3'-0"	7'-0"	HM	A	HM	2	--	3.0	3/A731	4/A731	5/A702	3
126	STORAGE	3'-0"	7'-0"	HM	A	HM	1	--	25.0	8	3		
126F	STORAGE	6'-0"	7'-0"	HM	AA	HM	3	--	25.0	8	3		
130A	MECHANICAL	3'-0"	7'-0"	HM	A	HM	2	--	7.0	1/A731	2/A731	5/A702	
130B	MECHANICAL	3'-0"	7'-0"	HM	A	HM	1	--	25.0	8	3		
135A	VESTIBULE	6'-0"	7'-0"	ALUM	BB	ALUM	05 / A721	--	2.0	2/A702, 10/A523	6/A702, 10/A702	1/A702	1, 9
135B	VESTIBULE	6'-0"	7'-0"	ALUM	BB	ALUM	3 / A720	--	6.0	10	4	9	1, 3, 9
140	MECH/ELEC	3'-0"	7'-0"	HM	A	HM	2	--	25.0	8	3		
140A	MDF	3'-0"	7'-0"	HM	A	HM	2	60	27.0	8	3		
145	ELEV MACH	3'-0"	7'-0"	HM	A	HM	1	90	25.0	8	3		
LEVEL 01													
105S	STAIR	3'-0"	7'-0"	HM	D	HM	1	60	9.0	8	3		3
140B	CUSTODIAL	3'-0"	7'-0"	HM	A	HM	1	--	27.0	8	3		
165S	STAIR 1	3'-0"	7'-0"	HM	D	HM	2	90	9.0	11	6		3
165SE	STAIR 1	3'-0"	7'-0"	HM	A	HM	2	--	3.0	3/A731	4/A731	5/A702	3
LEVEL 02													
200J	CUSTODIAL	3'-0"	7'-0"	HM	A	HM	1	45	26.0	8	3		
200K	MECH/ELEC	3'-0"	7'-0"	HM	A	HM	1	45	25.0	8	3		
200M	IDF	3'-0"	7'-0"	HM	A	HM	1	--	27.0	8	3		
204	STUDY	3'-0"	6'-11 3/4"	ALUM	B	ALUM	11 / A720	--	19.0	10	4	9	1
225S	STAIR 2	3'-0"	7'-0"	HM	D	HM	2	90	9.0	11	6		3
265S	STAIR 1	3'-0"	7'-0"	HM	D	HM	2	90	9.0	11	6		3
LEVEL 03													
300J	CUSTODIAL	3'-0"	7'-0"	HM	A	HM	1	45	26.0	8	3		
300K	MECH/ELEC	3'-0"	7'-0"	HM	A	HM	1	45	25.0	8	3		
300M	IDF	3'-0"	7'-0"	HM	A	HM	1	--	27.0	8	3		
304	STUDY	3'-0"	7'-0"	ALUM	B	ALUM	11 / A720	--	19.0	10	4	9	1
325S	STAIR 2	3'-0"	7'-0"	HM	D	HM	2	90	9.0	11	6		3
365S	STAIR 1	3'-0"	7'-0"	HM	D	HM	2	90	9.0	11	6		3
LEVEL 04													
400J	CUSTODIAL	3'-0"	7'-0"	HM	A	HM	1	45	26.0	8	3		
400K	MECH/ELEC	3'-0"	7'-0"	HM	A	HM	1	45	25.0	8	3		
400M	IDF	3'-0"	7'-0"	HM	A	HM	1	--	27.0	8	3		
404	STUDY	3'-0"	7'-0"	ALUM	B	ALUM	11 / A720	--	19.0	10	4	9	1
425S	STAIR 2	3'-0"	7'-0"	HM	D	HM	2	90	9.0	11	6		3
465S	STAIR 1	3'-0"	7'-0"	HM	D	HM	2	90	9.0	11	6		3
LEVEL 05													
500J	CUSTODIAL	3'-0"	7'-0"	HM	A	HM	1	45	26.0	8	3		
500K	MECH/ELEC	3'-0"	7'-0"	HM	A	HM	1	45	25.0	8	3		
500M	IDF	3'-0"	7'-0"	HM	A	HM	1	--	27.0	8	3		
504	STUDY	3'-0"	7'-0"	ALUM	B	ALUM	11 / A720	--	19.0	10	4	9	1
525S	STAIR 2	3'-0"	7'-0"	HM	D	HM	2	90	9.0	11	6		3
565S	STAIR 1	3'-0"	7'-0"	HM	D	HM	2	90	9.0	11	6		3
ROOF DECK BEARING													
625S		3'-0"	7'-0"	HM	A	HM	2	--	5.0	9/A702	8/A702	7/A702	

DOOR SCHEDULE - UNITS

DOOR NO.	LOCATION	DOOR			FRAME			FIRE RATING	HW SET	DETAILS - SHEET A701			REMARKS
		PR	WIDTH	HEIGHT	MATERIAL	ELEV	MATERIAL	ELEV		HEAD	JAMB	SILL	
A	ENTRY		3'-0"	7'-0"	WD	A	HM	1	--	17.0	8	3	3, 8
A1	ACCESSIBLE ENTRY		3'-0"	7'-0"	WD	A	HM	1	20	17.0	8	3	3, 8
B	BEDROOM		2'-10"	7'-0"	WD	A	HM	1	--	18.0	8	3	5, 6
B1	BEDROOM - ADA		3'-0"	7'-0"	WD	A	HM	1	--	18.0	8	3	5, 6
C	BATHROOM		2'-10"	7'-0"	WD	A	HM	1	--	15.0	8	3	6
C1	BATHROOM - ADA		3'-0"	7'-0"	WD	A	HM	1	--	15.0	8	3	6
F	MECHANICAL		3'-0"	7'-0"	HM	A	HM	1	--	24.0	8	3	

DOOR SCHEDULE - RM APARTMENT

DOOR NO.	LOCATION	DOOR			FRAME			FIRE RATING	HW SET	DETAILS - SHEET A701			REMARKS
		PR	WIDTH	HEIGHT	MATERIAL	ELEV	MATERIAL	ELEV		HEAD	JAMB	SILL	
154	RESIDENT MANAGER APT. ENTRY		3'-0"	7'-0"	HM	A	HM	2	--	4.0	8	3	3
B1	BEDROOM - ADA		3'-0"	7'-0"	WD	A	HM	1	--	18.0	8	3	
C1	BATHROOM - ADA		3'-0"	7'-0"	WD	A	HM	1	--	15.0	8	3	
D	CLOSET	Yes	5'-0"	7'-0"	WD	A	--	--	28.0	5	5	7	
E	CLOSET WD	Yes	5'-0"	7'-0"	WD	AA	HM	3	--	11.0	8	3	
F	MECHANICAL		3'-0"	7'-0"	HM	A	HM	1	--	24.0	8	3	

DOOR GENERAL NOTES

- REFER TO HARDWARE SPECIFICATION FOR DOOR HARDWARE SCHEDULE.
- UNDERCUT ALL UNIT ENTRY DOORS AS REQUIRED TO COORDINATE WITH FLOOR FINISH AND STILL MAINTAIN REQUIRED FIRE RATING.
- UNDERCUT ALL UNIT BEDROOM DOORS BY 1 1/4". REFER TO SPECIFICATIONS.
- ALL GLAZING IS SAFETY GLAZING U.N.O. ALL FIRE RATED CONSTRUCTION IS FIRE-RATED GLAZING U.N.O.
- ALL HM DOORS AND FRAMES TO BE PAINTED - REFER TO FINISH SCHEDULE.

REMARK NOTES

- REFER TO STOREFRONT ELEVATIONS FOR DIMENSIONS AND INFORMATION.
- CASED OPENING.
- PROVIDE CONTROLLED ACCESS, COORD. W/ ELECTRICAL DRAWINGS.
- UNIT MECHANICAL ROOM DOORS TYPICALLY DO NOT HAVE A FIRE RATING. HOWEVER, WHERE LOCATED IN A RATED WALL, PROVIDE A 20 MIN. FIRE RATING FOR DOOR (DOORS 203M, 215M, 303M, 315M, 403M, 415M, 503M & 515M. REFER TO PLANS TO VERIFY LOCATIONS).